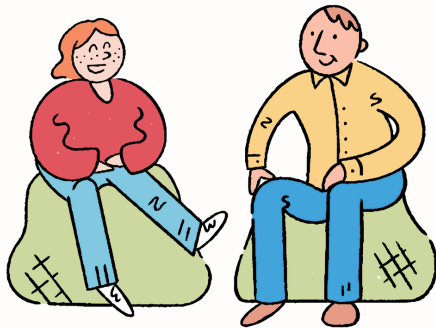


WHO WAS INVOLVED?

Relate was written by teachers, occupational therapists, speech and language therapists and NCSE staff specialising in behaviour and wellbeing, autism and curricular support.

School staff and students told us what should be included and there is a section called 'Students say...' in every element of support where students give their ideas and views on how to create an inclusive school where all students are supported.



WHAT IS RELATE?

NCSE Relate is a new resource to help schools in Ireland to support students to thrive in school.

Relate is about understanding students and making changes in the way things are done so that everyone can be successful in school.

The word 'Relate' comes from the fact that relationships are the most important thing to get right and that relating to other people or understanding them is a good place to start when supporting them.

NCSE Relate

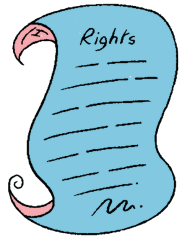
Information for Students



An Chomhairle Náisiúnta
um Oideachas Speisialta
National Council
for Special Education

www.ncse.ie/relate

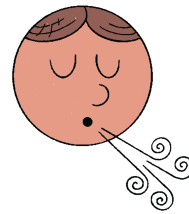
8 Principles



Rights Based



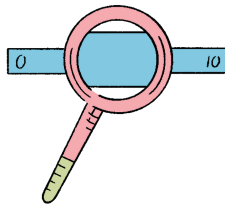
Student Voice



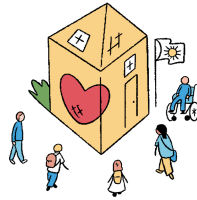
Regulation First



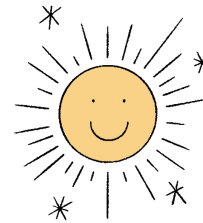
Neuro-affirmative



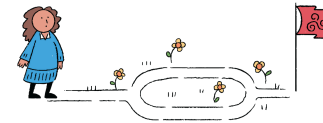
Solution Focused



Staff and Student Wellbeing



Unconditional Positive Regard



Universal Design for Learning

WHAT IS IT ABOUT?

Relate has 8 principles to guide school staff in their understanding of behaviour and inclusion. Then there are 6 elements of support to guide school staff to support a student, a group or even the whole class.

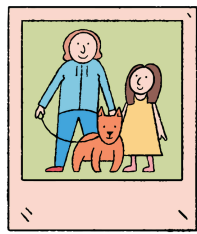
HOW DOES THIS AFFECT ME?

If you or a friend need more support, school staff can use Relate to support you by finding out what is important to you and what is getting in the way of your learning or you feeling good at school.

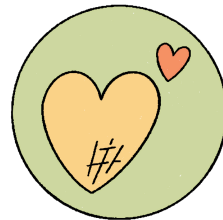
Student Voice is a principle of Relate and there are lots of ideas on how schools can find out more from students in a meaningful way.

There is a 'Getting to Know Me' tool that your teacher might give you to find out more about you. You can give them the teacher part so you can get to know them better too!

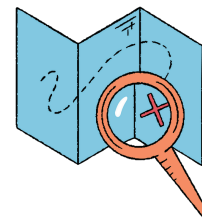
6 Elements of Support



The Understanding Element



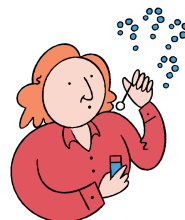
The Relationships Element



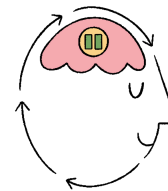
The Exploring Element



The Classroom Element



The Teaching Element



The Reflecting Element